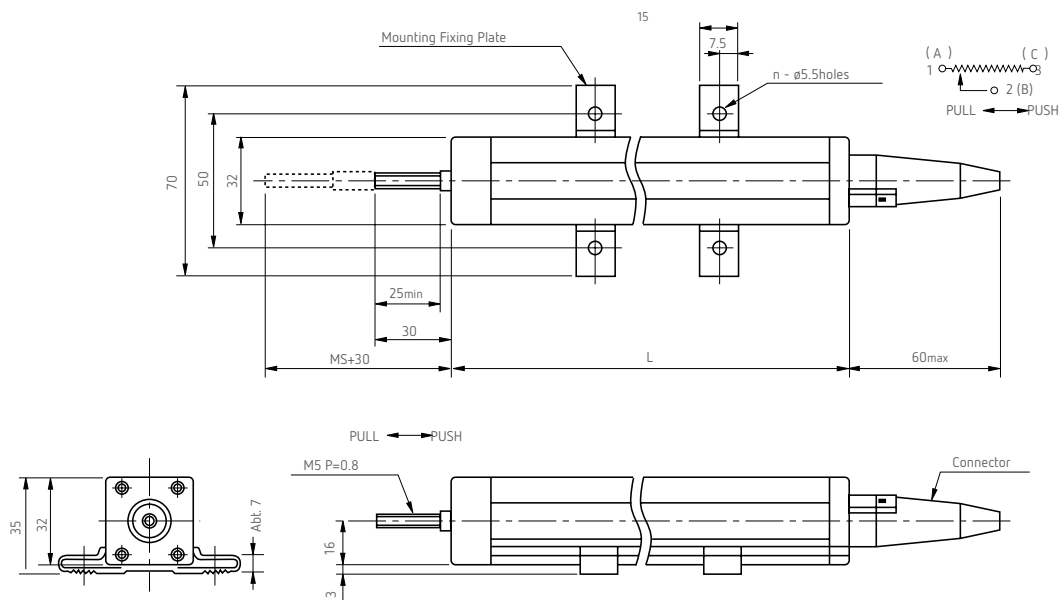




**mm 30FLP**

**Standard dimensions**



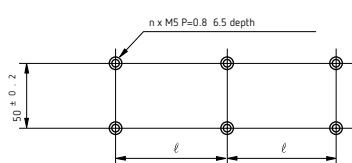
Model No.	L
30FLP100A	170
30FLP200A	270
30FLP300A	370
30FLP400A	470
30FLP500A	570
30FLP750A	820
30FLP1000A	1,070

**Specifications of Connector**

Number of poles: 6 poles  
Electrical wire diameter to be connected: ø6.3mm max

**Note:** 2 pcs mounting fixing plates are attached in models 30FLP100A and 30FLP500A and 3 pcs mounting fixing plates are attached in models 30FLP750A and 30FLP1000A

**Panel Arrangements**

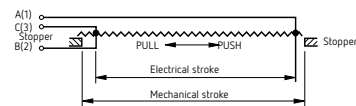


Stroke mm	100	200	300	400	500	750	1,000	
Ø	mm	70	170	270	370	470	360	485
Number of attached fixing plate		2	2	2	2	2	3	3



**Model 30FLP200A**

**Terminal Connection Diagram**



**Standard Model Nos.**

30FLP00A	stroke	100mm
30FLP200A	stroke	200mm
30FLP300A	stroke	300mm
30FLP400A	stroke	400mm
30FLP500A	stroke	500mm
30FLP750A	stroke	750mm
30FLP1000A	stroke	1000mm

## General Specifications

Model No.	30FLP100A	30FLP200A	30FLP300A	30FLP400A	30FLP500A	30FLP750A	30FLP1000A
Standard Resistance Range	1k ~ 10kΩ	2k ~ 20kΩ	5k ~ 50kΩ	5k ~ 100kΩ	5k ~ 200kΩ	5k ~ 200kΩ	10k ~ 500kΩ
Total Resistance Tolerance	Standard Class	±20% (M)					
	Precision Class	±10% (K)					
Independent Linearity Tolerance	Standard Class	±0.5%					
	Precision Class	±0.1%					
Super-precision Class	±0.075%	±0.05%				-	-
	Resolution	Essentially infinite					
Output Smoothness	Within 0.1% against input voltage						
Contact Resistance Variation	Within 2% C.R.V.						
Power Rating	1.25W	1.5W	2.0W	2.5W	5.0W	7.5W	10.0W
Electrical Stroke	100±1mm	200±1mm	300±1mm	400±1mm	500±1mm	750±1mm	1,000±1mm
Mechanical Stroke (MS) (Approx.)	105mm	205mm	305mm	405mm	505mm	755mm	1,005mm
Insulation Resistance	Over 1,000M Ω at 500V.D.C.						
Dielectric Strength	1 minute at 900 V.A.C.						
Max. Working Voltage	500V						
Friction	Within 2N (200gf)						
Stopper Strength	Approx. 20N (2kgf)						
Resistance Temperature Coefficient	±400p.p.m./°C						
Mass	Approx. 200g	Approx. 350g	Approx. 500g	Approx. 650g	Approx. 800g	Approx. 1,300g	Approx. 1,600g

The information provided herein is to the best of our knowledge true and accurate, it is provided for guidance only. All specifications are subject to change without prior notification.

**Althen – Your expert partner in Sensors & Controls | [althensensors.com](http://althensensors.com)**

Althen stands for pioneering measurement and custom sensor solutions. In addition we offer services such as calibration, design & engineering, training and renting of measurement equipment.

Germany/Austria/Switzerland  
info@althen.de

Benelux  
sales@althen.nl

France  
info@althensensors.fr

Sweden  
info@althensensors.se

USA/Canada  
info@althensensors.com

Other countries  
info@althensensors.com