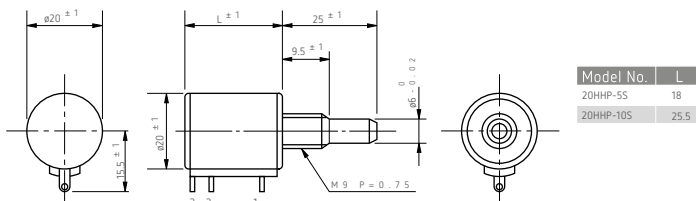




**α 20HHP**

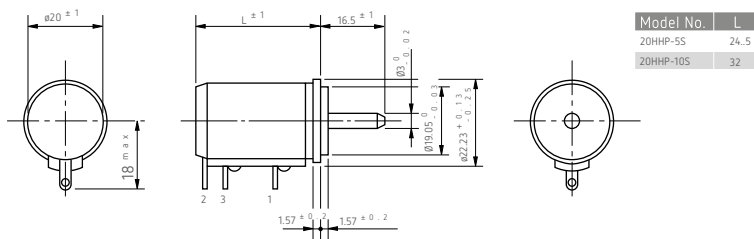
**Standard dimensions (with metric dimensions)**

**Bushingmount type**



Note: 1pc. Inner teeth washer and 2 pcs. Hex nuts are attached

**Servomount type**



**Standard Model Nos.**

- Bushingmount type:**  
 20HHP-5S (5-turn)  
 20HHP-10S (10-turn)
- Servomount type:**  
 20HHPS-5S (5-turn)  
 20HHPS-10S (10-turn)

**General Specifications**

**Standard Resistance**

**Values:** 2k, 5k, 10k, 20k, 50k (Ω) (5-turn)  
 2k, 5k, 10k, 20k, 50k, 100k (Ω) (10-turn)

**Total Resistance**

**Tolerance:** Standard Class ±10%(K)  
 Precision Class ±5%(J)

**Independent Linearity**

**Tolerance:**

	5-turn	10-turn
Standard Class	±0.35%	±0.25%
Precision Class	±0.2%	±0.1%

**Resolution:**

Essentially infinite

**Output Smoothness:**

Within 0.05% against input voltage (5-turn)  
 Within 0.015% against input voltage (10-turn)

<b>Contact Resistance Variation:</b>	Within 5% C.R.V. (5-turn) Within 3% C.R.V. (10-turn)
<b>Power Rating: Electrical</b>	1.0W (5-turn) 2.0W (10-turn)
<b>Travel: Mechanical Travel:</b>	360° X n ±5° (n: No. of turns)
<b>Insulation Resistance: Dielectric Strength: Starting Torque:</b>	360° X n $\begin{matrix} +10^\circ \\ 0^\circ \end{matrix}$ (n: No. of turns) Over 100MΩ at 1,000V.D.C. 1 minute at 1,000 V.A.C. Within 5mN·m (50gf·cm) (bushingmount type)
<b>Stopper Strength:</b>	Within 5mN·m (50gf·cm) (Servomount type) Approx. 0.9N·m (9kgf·cm) (bushingmount type)
<b>Max. Working Voltage:</b>	Approx. 0.9N·m (6kgf·cm) (servomount type) 500V
<b>Resistance Temperature Coefficient:</b>	±100p.p.m./°C
<b>Mass:</b>	Approx. 20g (5-turn) Approx. 30g (10-turn)

### ■ Special Specifications Available

Extra taps (available up to 1 tap, Multi-ganged (available up to 2-gangs) , Shaft with front and rear extension (rear shaft with 2mm dia. and 10mm length) Shaft dia. (ø6.35 for 20HHP, ø3.175 for 20HHPS) • bushing with inch dimensions < special Machining on the shaft, With slipping -clutch (20mN·m~60mN·m) with a limit-switch adaptor ., simple sealed housing (except servomount type).