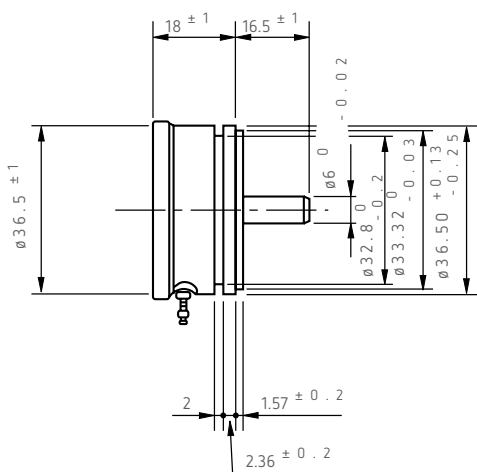




**α FCP40A**

**Standard dimensions**



Model FCP40A

**General Specifications**

**Standard Resistance**

<b>Values:</b>	1k, 2k, 5k, 10 k ( $\Omega$ )
<b>Special Practical Resistance Values:</b>	500, 20k, 50k, 100k, 200k ( $\Omega$ )
<b>Total Resistance Tolerance:</b>	Standard Class $\pm 10\%$ (K)
<b>Independent Linearity Tolerance:</b>	Standard Class $\pm 0.5\%$ Precision Class $\pm 0.25\%$ Super precision Class $\pm 0.1\%$

<b>Resolution:</b>	Essentially infinite
<b>Output Smoothness:</b>	Within 0.1% against input voltage

**Contact Resistance**

<b>Variation:</b>	Within 2% C.R.V.
<b>Power Rating:</b>	2.0W
<b>Electrical Travel:</b>	$340^\circ \pm 5^\circ$
<b>Mechanical Travel:</b>	$360^\circ$ (Endless)
<b>Insulation Resistance:</b>	Over 1,000M $\Omega$ at 1,000 V.D.C
<b>Dielectric Strength:</b>	1 minute at 1,000 V.A.C.
<b>Starting Torque:</b>	Within 3mN·m (30gf·cm)
<b>Resistance Temperature Coefficient:</b>	$\pm 400$ p.p.m./ $^\circ\text{C}$
<b>Mass:</b>	Approx. 60g

**Special Specifications Available**

Extra taps (available up to 3 taps), multi-ganged (available up to 7 gangs, housing length is extended by 12mm per 1 gang), shaft with front and rear extension (rear shaft with 6mm dia. and 15mm length), with stopper (rotating angle becomes  $320^\circ$  and stopper strength is  $0.9\text{N}\cdot\text{m}$  [ $9\text{kgf}\cdot\text{cm}$ ]), special electrical travel, shaft dia. ( $\varnothing 6.35\text{mm}$ ) with inch dimensions, special machining on the shaft.