



mm MST



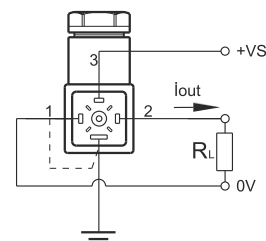
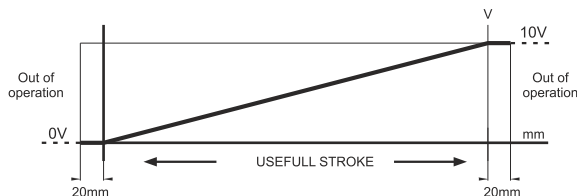
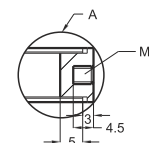
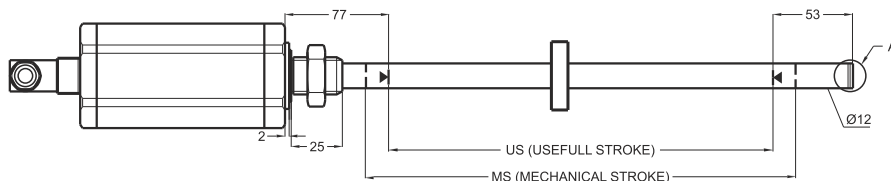
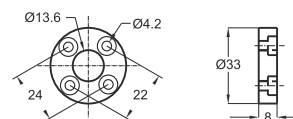
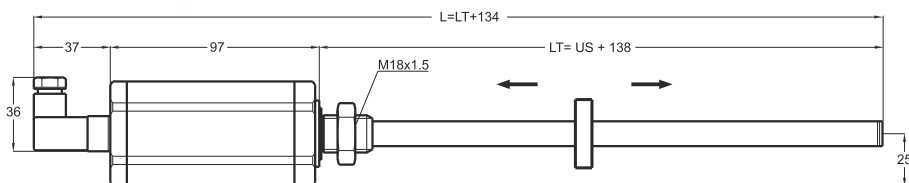
Features

- Measuring range 100-900 mm
- 16 bit resolution
- Output 0 ... 10V, 4-20mA, 0-20mA
- 24 VDC power supply

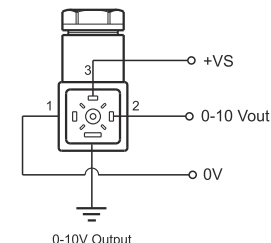
Technical Specifications

Measurement stroke	100 to 900 mm
Resolution	16 bit (200µm)
Repeatability	<0.05mm
Output	0 ... 10V, 4-20mA, 0-20mA
Power supply	24 VDC ±10%
Displacement speed	< 10 m/s

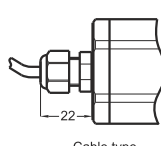
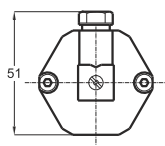
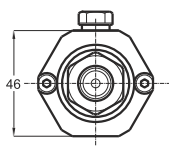
Sampling rate	1Khz
Max. Consumption	50mA
Max. output noise	<5mVpp
Max. output value	10.5 Volt
Reverse polarity protection	Yes



0-20mA, 4-20mA Output



0-10V Output



Cable type

MST (mm)	100	150	200	250	300	350	400	450	500	550	600	650	700	750	800	850	900
US (Usefull Stroke)	108	158	208	258	308	358	408	458	508	558	608	658	708	758	808	858	908
MS (Mechanical Stroke)	148	198	248	298	348	398	448	498	548	598	648	698	748	798	848	898	948
LT	238	288	338	388	438	488	538	588	638	688	738	788	838	888	938	988	1038
L (Total Length)	372	422	472	522	572	622	672	722	772	822	872	922	972	1022	1072	1122	1172

Model	Measurement stroke	Resolution	Output	Connector / Cable
(example) MST	900	A	V10	C2
MST	100 ... 900mm	A : 16 bit	V10 : 0-10V I04 : 4-20mA I20 : 0-20mA	C2 : 4 pin connector 1M : 1 meter cable 2M5 : 2,5 meter cable

The information provided herein is to the best of our knowledge true and accurate, it is provided for guidance only. All specifications are subject to change without prior notification.

Althen – Your expert partner in Sensors & Controls | althensensors.com

Althen stands for pioneering measurement and custom sensor solutions. In addition we offer services such as calibration, design & engineering, training and renting of measurement equipment.

Germany/Austria/Switzerland
info@althen.de

Benelux
sales@althen.nl

France
info@althensensors.fr

Sweden
info@althensensors.se

USA/Canada
info@althensensors.com

Other countries
info@althensensors.com