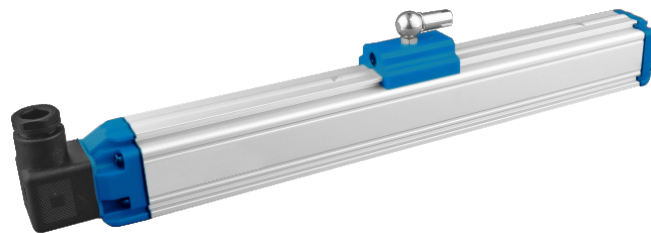




mm MSW

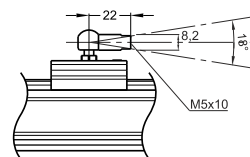
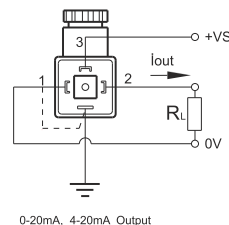
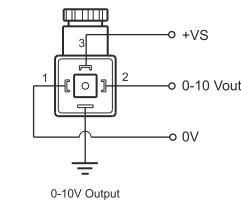
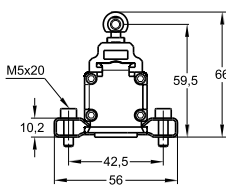
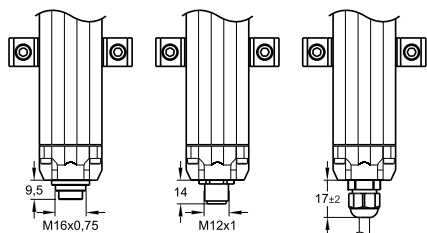
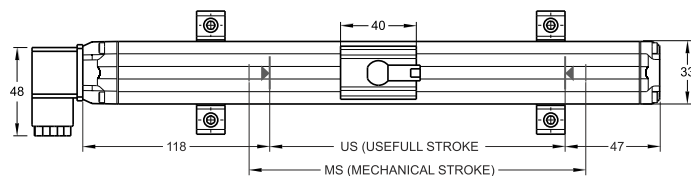
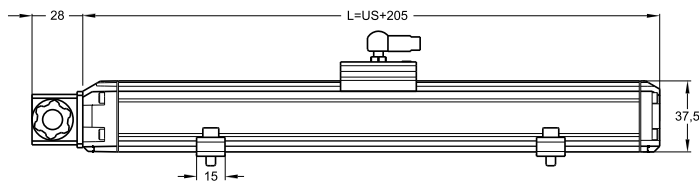
Features

- Measuring range 100 - 3000 mm
- 16 bit resolution
- Output 0...10 V, 0...20 mA, 4...20mA
10...0 V, 20...0 mA, 20-4 mA
- 24 VDC power supply
- IP Protection: IP65



Technical Specifications

Measurement stroke	100 to 3000 mm	Max. consumption	(50 mA - 90 mA) depending on stroke length
Resolution	16 bit DAC output	Max. output noise	< 5 mVpp
Repeatability	±0,005% (full scale)	Max. output value	10.5 Volt
Output	0-10 V, 4-20 mA, 0-20 mA, 10-0 V, 20-4 mA, 20-0 mA	Linearity	±0,02% full scale (min. 100 µm)
Power supply	24 VDC ±10%	Update time	0,5 ms up to 1000 m / 0,8 ms up to 2000 m
Displacement speed	< 10 m/s	Reverse polarity protection	Up to -30 VDC
Sampling rate	up to 2 kHz depending on stroke length	Overvoltage protection	Up to 40 VDC



MSW (mm)	100	150	200	250	300	350	400	450	500	550	600	650	700	750	800	850	900	1000	1100	1200	1300	1400	1500	1600	1700	1800	1900	2000
US (Useful Stroke)	140	190	240	290	340	390	440	490	540	590	640	690	740	790	840	890	940	1040	1140	1240	1340	1440	1540	1640	1740	1840	1940	2040
MS (Mechanical Stroke)	160	210	280	310	360	410	460	510	560	610	660	710	760	810	860	910	960	1060	1160	1260	1360	1460	1560	1660	1760	1860	1960	2060
L (Total Length)	305	355	405	455	505	555	605	655	705	755	805	855	905	955	1005	1055	1105	1205	1305	1405	1505	1605	1705	1805	1905	2005	2105	2205

Model	Measurement stroke	Resolution	Output	Connector / Cable
(example) MSW	300	A	V10	C1
MSW	100 ... 2000 mm	A: 16 bit	V10: 0 - 10 V V01: 10 - 0 V I40 : 4 - 20 mA I20 : 0 - 20 mA I04 : 20 - 4 mA V11: 0 - 10 V / 10 - 0 V I41 : 4 - 20 mA / 20 - 4 mA I21 : 0 - 20 mA / 20 - 0 mA	C1: 4 pin connector